

# Furnishings

- A. Plastic Side Chair
- B. Padded Side Chair
- C. Padded Arm Chair
- D. High Stool

A.



B.



C.



D.



# Accessories

- E. Posterboard
- F. Showcase
- G. Perfboard
- H. Wastebasket
- I. Easel
- J. Bag Holder
- K. Chrome Stanchion
- L. 8' Velour Rope
- M. Small Refrigerator
- N. Literature Rack
- O. Sales Counter
- P. 4' Table Riser
- Q. 6' Table Riser
- R. 8' Table Riser
- S. 8' High Drape
- T. 3' High Drape



# Tables

## Skirted Tables

- A. 4' L x 24"W x 30"H
- B. 6' L x 24"W x 30"H
- C. 8' L x 24"W x 30"H
  
- D. 4' L x 24"W x 42"H
- E. 6' L x 24"W x 42"H
- F. 8' L x 24"W x 42"H

Skirted tables include a white vinyl top and skirting on 3 sides. 4<sup>th</sup> sided skirting can be ordered at an additional cost.



## Unskirted Tables

- G. 4' L x 24"W x 30"H
- H. 6' L x 24"W x 30"H
- I. 8' L x 24"W x 30"H
  
- J. 4' L x 24"W x 42"H
- K. 6' L x 24"W x 42"H
- L. 8' L x 24"W x 42"H

Unskirted tables include a white vinyl top.



## Pedestal Tables

- M. 18" H x 30" Round
- N. 30" H x 30" Round
- O. 42" H x 30" Round
  
- P. 30" H x 42" Round
  
- Q. 42" H x 30" Round Cover



# Floor Covering

## Standard Carpet

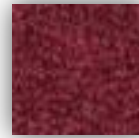
## 10 oz. nylon carpeting



Black



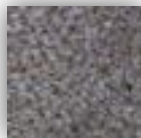
Blue



Burgundy



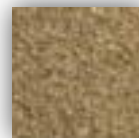
Green



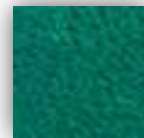
Grey



Red



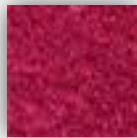
Tan



Teal

## Premium Carpet

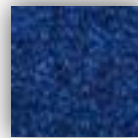
## 28 oz. nylon carpeting



Berry



Black



Blue



Burgundy



Charcoal



Cobalt



Emerald



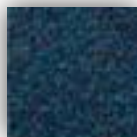
Gold



Green



Ice



Navy



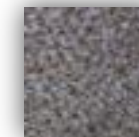
Platinum



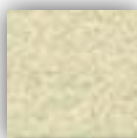
Purple



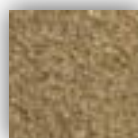
Red



Silver



Soft Ivory



Tan



Teal



White

# Rental Displays

## What's Included?

All rental units come with the options shown. This includes booth carpet, lighting and full color graphics for the printed panels shown at the right. Additional graphic panels are available at the rates listed on our sign and banner form. Panel dimension will be provided upon request.

A Hubbell/Tyner service representative will touch base with you to discuss your rental display and answer any questions you may have upon receipt of your order.

## Custom Rental Displays

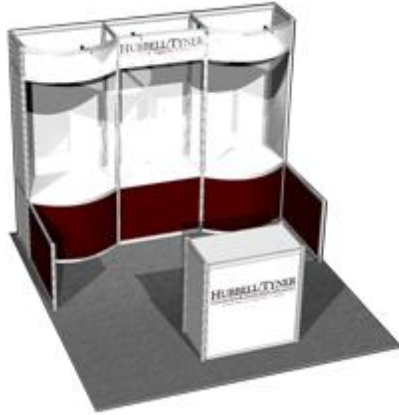
Please note that custom display options are available upon request. Please call us at 651-917-2632 to discuss your custom rental display.

## Order Deadline

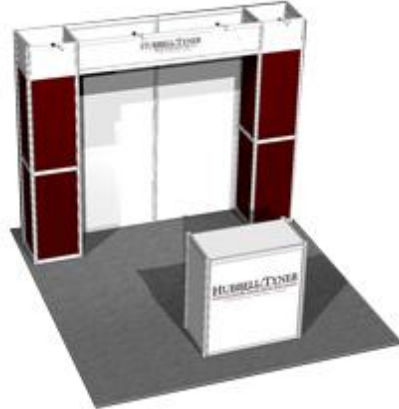
All rental display orders must be placed at least 14 days prior to the 1<sup>st</sup> day of exhibitor move in.

### 10' x 10' Rental Displays

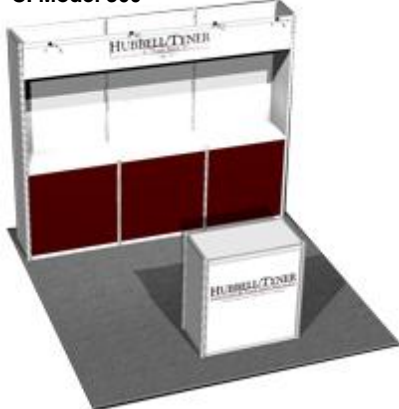
**A. Model 100**



**B. Model 200**

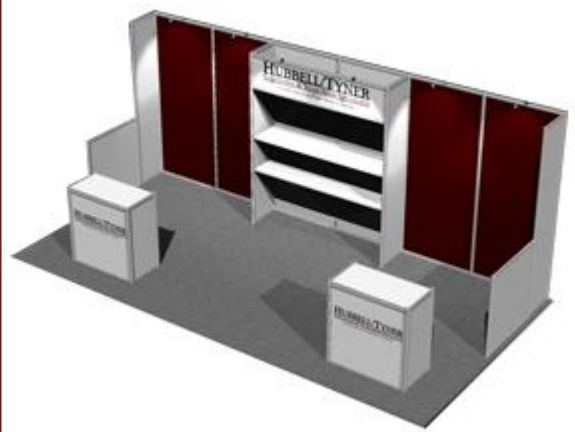


**C. Model 300**

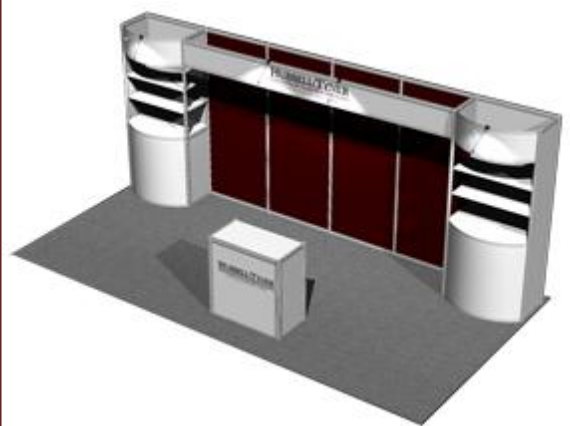


### 10' x 20' Rental Displays

**D. Model 100**



**E. Model 200**



**F. Model 300**

